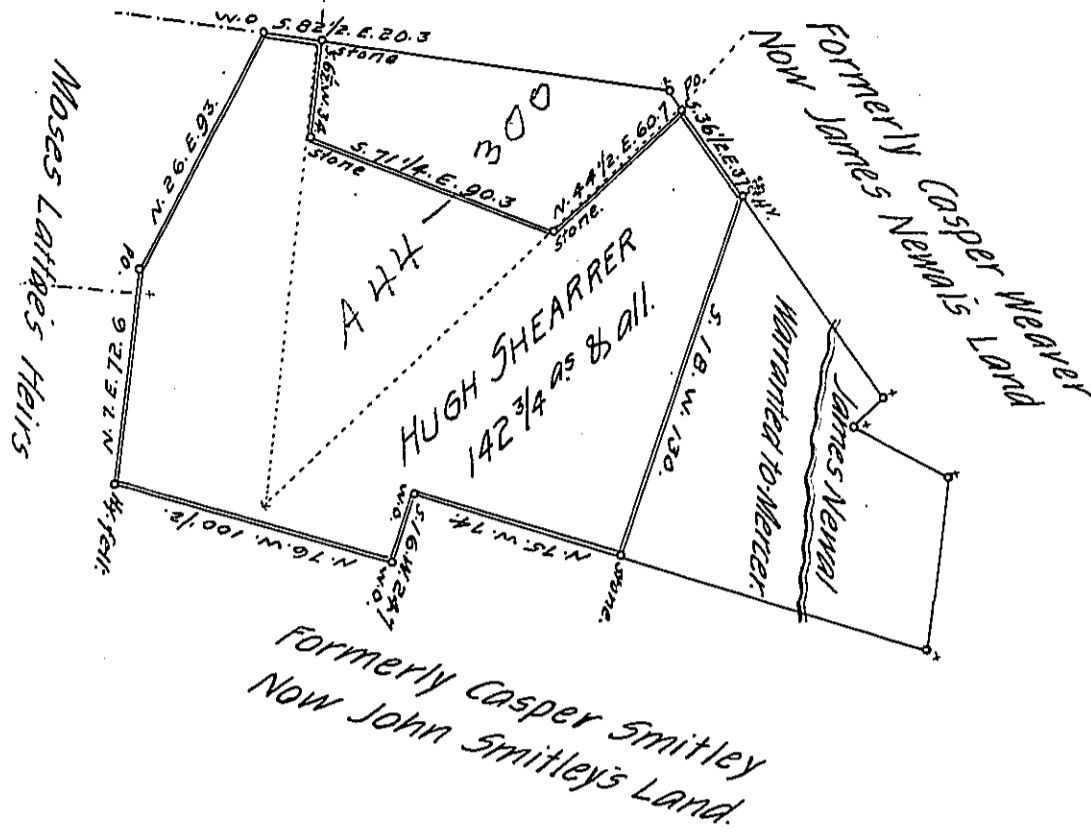


(SWA 13-220
221)

H 46-25⁵

A82-281
Formerly John Jack's Land
George Brinker William Leasure



C116-27

August 14th 1846.

Surveyed the above described One hundred forty two acres, three quarters and the Usual Allowance, for Hugh Shearrer. It being a part of a larger tract of Land, containing 214 acres, 25 perches & allowance, which was Surveyed May 2^d 1787. In Pursuance of a Warrant granted to Thomas Mercer, dated the 25th day of Sept. 1786. Situate on the Waters of Sewickley-in Mountpleasant township, Westmoreland County, Penn^a

George Mechling, D. S.

To John Laporte, Esquire,
Surveyor General of Penn^a

(Note) The part marked with poped lines was actually patented to John Jack, the part with in the shaded Lines Contains 32 acres. & all.

Geo. Mechling.

IN TESTIMONY that the above is a copy of the original remaining on file in the Department of Internal Affairs of Pennsylvania, made conformably to an Act of Assembly approved the 16th day of February, 1833, I have hereunto set my Hand and caused the Seal of said Department to be affixed at Harrisburg, this twenty-first day of February 1906.

Loach
Secretary of Internal Affairs.